

**Report of:** Head of Locality Partnerships

**Report to:** Inner East Community Committee:

**Burmantofts & Richmond Hill, Gipton & Harehills,  
Killingbeck & Seacroft**

**Report author:** Oliver Taylor, Localities Officer, 0113 37 89953

**Date:** 14<sup>th</sup> March 2024

**To Note**

## **Inner East Community Committee - Update Report**

---

### **Purpose of report**

- 1.** To bring to members' attention an update of the work which the Communities Team is engaged in, based on priorities identified by the Community Committee. It also provides opportunities for further questioning, or to request a more detailed report on a particular issue.
- 2.** This report provides regular updates on some of the key activities between Community Committee meetings and functions delegated to Community Committees, Community Champions roles, community engagement, partnership and locality working.

### **Main issues**

- 3.** Updates by theme

#### 4. Environment & Community Safety – Champion Councillor Asghar Khan

##### Police Update

##### Serious and Acquisitive Crime Demand Data

<b>Inner East Crime Category</b>	<b>Jan - Feb 23</b>	<b>Jan - Feb 24</b>	<b>Change</b>
Burglary - business and community	12	18	6
Burglary - residential	71	66	5
Robbery	13	22	9
Theft from motor vehicle	25	32	7
Theft from the person	12	11	1
Theft of motor vehicle	26	18	8
<b>Grand Total</b>	<b>159</b>	<b>167</b>	<b>8</b>

<b>Burmantofts and Richmond Hill Crime Category</b>	<b>Jan - Feb 23</b>	<b>Jan - Feb 24</b>	<b>Change</b>
Burglary - business and community	3	13	10
Burglary - residential	24	16	8
Robbery	9	1	8
Theft from motor vehicle	6	11	5
Theft from the person	2	3	1
Theft of motor vehicle	9	5	4
<b>Grand Total</b>	<b>53</b>	<b>49</b>	<b>4</b>

<b>Gipton and Harehills Crime Category</b>	<b>Jan - Feb 23</b>	<b>Jan - Feb 24</b>	<b>Change</b>
Burglary - business and community	4	3	1
Burglary - residential	35	24	11
Robbery	2	15	13
Theft from motor vehicle	15	11	4
Theft from the person	7	7	0
Theft of motor vehicle	11	8	3
<b>Grand Total</b>	<b>74</b>	<b>68</b>	<b>6</b>

<b>Killingbeck and Seacroft Crime Category</b>	<b>Jan - Feb 23</b>	<b>Jan - Feb 24</b>	<b>Change</b>
Burglary - business and community	5	2	3
Burglary - residential	12	26	14
Robbery	2	6	4
Theft from motor vehicle	4	10	6
Theft from person	3	1	2
Theft of motor vehicle	6	5	1
<b>Grand Total</b>	<b>32</b>	<b>50</b>	<b>18</b>

## Anti-Social Behaviour Incident Demand Data

Inner East ASB Call Category	Jan - Feb 23	Jan - Feb 24	Change
Adult nuisance non - alcohol related	6	6	0
Alcohol	2	2	0
Fireworks/snowballing	0	1	1
Littering/drugs paraphernalia	1	1	0
Neighbour related	9	10	1
Nuisance car/van	1	4	3
Nuisance motorcycle/quad bike	14	11	3
Youth related	21	6	15
<b>Grand Total</b>	<b>54</b>	<b>41</b>	<b>13</b>

Burmantofts and Richmond Hill ASB Call Category	Jan - Feb 23	Jan - Feb 24	Change
Adult nuisance non - alcohol related	2	3	1
Alcohol	1	1	0
Fireworks/snowballing	0	0	0
Littering/drugs paraphernalia	0	1	1
Neighbour related	4	3	1
Nuisance car/van	1	1	0
Nuisance motorcycle/quad bike	5	2	3
Youth related	5	2	3
<b>Grand Total</b>	<b>18</b>	<b>13</b>	<b>5</b>

Gipton and Harehills ASB Call Category	Jan - Feb 23	Jan - Feb 24	Change
Adult nuisance non - alcohol related	4	2	2
Alcohol	1	0	1
Fireworks/snowballing	0	0	0
Littering/drugs paraphernalia	1	0	1
Neighbour related	3	5	2
Nuisance car/van	0	4	4
Nuisance motorcycle/quad bike	0	3	3
Youth related	10	1	9
<b>Grand Total</b>	<b>19</b>	<b>14</b>	<b>5</b>

Killingbeck and Seacroft ASB Call Category	Jan - Feb 23	Jan - Feb 24	Change
Adult nuisance non - alcohol related	0	1	1
Alcohol	0	1	1
Fireworks/snowballing	0	1	1
Littering/drugs paraphernalia	0	0	0
Neighbour related	2	2	0
Nuisance car/van	0	0	0
Nuisance motorcycle/quad bike	9	6	3
Youth related	6	3	3
<b>Grand Total</b>	<b>17</b>	<b>14</b>	<b>3</b>

## LASBT Update

<b>LASBT East - Caseload</b>	<b>Count</b>	<b>% Change on previous month</b>
<b>Current East Caseload</b>	<b>147</b>	<b>+ 4%</b>
<b>Cases Open in last Month</b>	<b>33</b>	<b>+136%</b>
<b>Closed Cases in last Month</b>	<b>40</b>	<b>-32%</b>
<b>% of active citywide caseload</b>	<b>32%</b>	<b>-2%</b>

Of the 33 new cases opened 26 of these were in Inner East which were split as follows

Burmantofts & Richmond Hill = 12, of which, 11 x ASB, 1 x DV

Gipton & Harehills = 2, of which, 2 x ASB

Killingbeck & Seacroft = 12, of which 11 x ASB, 1 x Hate

### **Key Points**

LASBT continue to support the Clear, Hold, Build strategy in Harehills, attending warrants and action days dealing with premises involved with drugs and shop premises involved in the trade of illicit goods.

Following a night where there was significant disorder outside a property in Seacroft, known to be an AirBNB, extensive enquiries were made by LASBT to track down the owner(s), Premises Closure warnings were issued to a number of addresses in the South of England and although there was no direct response, the property now appears to have been put up for sale which is a result.

A successful bid from Burmantofts Housing Office, supported by the Police, will see LASBT's Team Leodis deployed to the Burmantofts/Lincoln Green area, working with partners to tackle the impact of local street gangs on vulnerable residents in the from of cuckooing. A number of measures will be taken and all tools and powers used to tackle this issue over the next 3 months or so.

## Selective Licensing Update

### **Licence administration**

New licence applications continue to be received eg. as properties are sold and the new owner applies for a licence or where properties come into licensing for the first time.

Existing licences continue to need updating (varying) to reflect changes to licence holder/property manager details eg a change of address, or in some instances revoking.

Licence data on 13 February 2024:

- **3648** licences in force
- **110** licences revoked due to licence holder no longer retaining an interest in property
- **92** licences varied to reflect changes such as new Property Manager or new Licence Holder address **531** licence applications withdrawn, cancelled, refused or rejected
- **145** applications being processed
- **90** applications to process

### **Unlicensed properties**

Unlicensed properties continue to be investigated by the SL team. They're picked up proactively as part of the work in the targeted streets or reactively through for example a complaint being received in the Private Sector Housing Service or intelligence/referrals from partners.

2 final civil penalty notices were served by the team in the two month period in respect of 2 properties being operated without a licence.

3 inspections were carried out at unlicensed licensable properties in response to housing standards complaints having been received by the service.

### **Compliance inspections of licensed properties**

As well as continuing to proactively target licensed properties in the Nowells and Ashtons the SL team also undertake inspections across the designated area in response to complaints received and referrals/intelligence from partners.

In the 2-month period –

**11 inspections** were carried out at licensed properties.

**None** of the properties inspected were compliant with licence conditions. **35** individual licence breaches were found in total at the 11 properties.

Failure to maintain the property in good order internally and externally accounted for **32%** of the licence breaches while the absence of working smoke alarms accounted for **14%**.

**4** final civil penalty notices were served on Licence Holders in respect of serious licence breaches at **2** properties.

During inspections of licensed properties, officers 'hazard spot'. All **11** properties inspected were found to contain potential health and safety hazards. The most commonly found issues were fire safety shortfalls, damp and falls.

**33 re-inspections** were carried out by the SL team in December and January. **13** of the properties visited required no further action as officers found that sufficient works and improvements had been carried out by the licence holders to address the licence breaches previously identified and the potential health and safety hazards found at the initial compliance visit.

Below are some 'before & after' photographs taken by SL officers at three licensed properties in the designated area -

#### **2<sup>nd</sup> floor bedroom:**

Before	After
	

#### **1<sup>st</sup> floor bedroom:**

Before	After
	

Before:



After:



## **Referrals**

During compliance inspections, officers engage with tenants/occupiers to ensure support needs are met and to pick up on any issues that maybe affecting them. Referrals are also made further to the SL team engaging with residents, landlords/property managers and partners outside of inspections. **29** referrals were made in total during December and January. 11 of these were to colleagues in Council Tax and the Council's Cleaner Neighbourhoods Team; 8 were to LASBT and the Police and 2 were for housing support. In addition, one referral was made for each of the following matters;

- Support around employment & training
- ESOL
- Support around budgeting & benefits
- Homelessness prevention

During a proactive compliance inspection in January, SL officers came across 2 adult brothers living in a cluttered, chaotic house. It emerged that the elder brother is unwell and has been for some time. The younger brother is his full-time carer.

Whilst there are support needs around household bills and money – which have been referred to a 3rd sector organisation - the younger brother asked for support to help with his wellbeing. The officers are currently engaging with partners around this and continue to check in with the residents every time they are in the area.

Had the SL officers not stepped over the threshold it is highly unlikely that the brothers would have reached out for help.

## **Partnership working**

The SL Team continue to support the Police's Clear, Hold Build project in Harehills. Two partnership meetings were attended in December and January.

In January, two SL officers attended a workshop at the Compton Centre that had been organised by the Council's Migrant Access Project Team. The officers spoke about Selective Licensing and the work of the Private Sector Housing Service with a group of migrant community networkers who actively share messages with their community and link / signpost people to services.

## **Summary from the rest of the Private Sector Housing Service (the service)**

In addition to the SL team working on Selective Licensing, additional resources from the service continue to target the area to support the delivery of the scheme.

Officers from the Empty Homes and Loans teams have continued to target several empty homes and have returned 9 back into occupation during the 2 month period. They also continue to proactively visit long term empty homes and have served several legal notices to remove refuse, tidy gardens etc on a further 13 properties.

As well as the Selective Licensing team supporting CommUnity / Operation Barrowberry, officers from the Rogue Landlord Unit are targeting properties and working with the Police directly. They have attended 10 properties with the Police as part of them exercising warrants and this has resulted in 6 emergency prohibition orders having been served on landlords. They have also inspected a number of properties based on intelligence and linked to the Operation resulting in the service of further legal notices.

To support the Council's homelessness prevention strategy, officers inspect PRS properties as part of ensuring that those placed in the private rented sector (PRS) have safe warm homes. As part of that process, we have ensured 3 properties are compliant with the necessary standards.

## **5. Health & Wellbeing – Champion Councillor David Jenkins**

### Public Health Update

#### **Chief Medical Officer visit 17<sup>th</sup> January**

It was a great privilege to host the Chief Medical Officer, Chris Witty in Harehills. Chris met with the city wide Better Together providers at Compton Centre as well as meeting local elected members and partners. Chris undertook a walk from Compton Centre to CATCH. It was a great opportunity to talk to him about the successes and challenges in the local area. He then met young people and partners at CATCH.

After the session, Chris fed back how impressed he was with our work, especially around working in communities, and the strong partner relationships across the city, which had changed his thinking around how he might frame his next annual CMO report.

#### **Community Oral Health Awareness project**

This project was part funded by Inner East elected members and MAP (Migrant Access Projects) to promote oral health in the community. The funding was used to provide toothbrushes, toothpaste and oral health information leaflets. A session was delivered at the Compton Centre that attracted 25 community members.

Another session was delivered at St. Aiden's Church Hall for the Senegalese Community with 34 young people and adults. Both sessions had excellent feedback and more community sessions will be planned subject to further funding.

A final feedback session will take place in March to bring the community members to reflect on their learning and feedback concerns from local communities.

For more information contact – [chetna.patel@leeds.gov.uk](mailto:chetna.patel@leeds.gov.uk)

#### **Domestic Violence and Abuse HATCH sub group**

The sub group is continuing to focus on campaigns on young people and domestic violence and abuse particularly around healthy relationships training and education working with local partners including GIPSIL. There will also be a campaign focusing on men and domestic violence and abuse later in the year.

We are also continuing to identify a representative from West Yorkshire Police to join our sub group.

For more information contact - [chetna.patel@leeds.gov.uk](mailto:chetna.patel@leeds.gov.uk)

#### **ROMA women's group update.**

The group is going from strength to strength, now meeting twice a week at the SHINE building and the Community HUB Building in Chapeltown. Topics that have been delivered have been on sexual health, cancer awareness and a talk with the local LCP Business Manager to help support the Roma Community with their barriers to accessing Primary Care.

Contact [tina.leslie@leeds.gov.uk](mailto:tina.leslie@leeds.gov.uk)

#### **Update on Licencing**

The public health team and the alcohol and drugs team have been involved in delivering representations at licensing subcommittee. Currently there have been 12 license reviews as part of the Clear Hold Build programme in Harehills, of those 8 licenses have been revoked and the other 4



off license premises having further conditions placed on them. This has been a resounding success with partnership support from West Yorkshire Police, elected members, Entertainment licensing and West Yorkshire Trading Standards colleagues.

### **Harehills, Burmantofts and Richmond Hill and Gipton Health Needs Assessments**

Over the next 18 months the Public Health Localities team will be conducting three Health Needs and Assets Assessments across the inner East; one in Harehills, one in Gipton and one for Burmantofts and Richmond Hill.

A Health Needs and Assets assessment is a systematic process of;

- identifying the health needs and resources of a specific population and;
- what changes are required to meet health needs, building on the existing assets in the community.

They provide an opportunity to bring evidence and understanding "into one place" to:

- Inform decision making and local practice.
- Influence service planning and commissioning.
- Strengthen partnership working around key themes.
- Develop a health strategy that is responsive to the assets in the community and people's needs.

As previously mentioned, a key part of the Health Needs & Assets assessment is community and stakeholder consultation and since July 2023 we have been working with local community groups and organisations to support residents to complete a short survey about their health and happiness in relation to where they live.

We have completed approximately 150 surveys in Burmantofts, Richmond Hill with the support of a range of local organisations and services in the area.

We have completed approximately 150 surveys in Harehills with the support of a range of local organisations and services in the area.

We have completed approximately 80 surveys in Gipton with the support of; The Old Fire Station, Space 2 and Zest.

Based on findings from the consultation, there will also be an opportunity for residents to attend topic specific focus groups to have more in-depth discussions around particular themes and topics raised.

For more information and any support with the above please contact:

Harehills [Parminder.grewal@leeds.gov.uk](mailto:Parminder.grewal@leeds.gov.uk)

Burmantofts and Richmond Hill [Chetna.patel@leeds.gov.uk](mailto:Chetna.patel@leeds.gov.uk)

Gipton [jessica.dewhurst@leeds.gov.uk](mailto:jessica.dewhurst@leeds.gov.uk)

Support [tina.leslie@leeds.gov.uk](mailto:tina.leslie@leeds.gov.uk)

### **Childhood Vaccination and Immunisation Project – For York Road PCN patients**

Public Health Localities have been supporting York Road PCN to develop a community-based vaccine project to increase the uptake of the MMR vaccine in children aged 1-5 years.

Three stay and play sessions took place between July and August 2023 at The Old Gipton Fire Station and The Vinery Centre.

At these sessions, families that had missed their MMR1 and MMR2 vaccinations were invited to

attend to; enjoy free children's activities, learn more about the vaccine from trained nurses and, if comfortable, get their child vaccinated.

We are still awaiting final evaluation figures from the PCN. However initial reports show;

- Approx 10 families chose to have their children vaccinated at the events.
- Where possible, children were vaccinated with all outstanding vaccines rather than just MMR.
- Some families decided not to attend the soft play but off the back of engagement, chose to re-book for vaccines at their GP surgery.

Initial feedback and learning:

- Sessions during the summer holidays were difficult / less accessible for families with multiple children, some of which were too old for soft play.

### **Gipton Winter Wellbeing Tour**

This project was developed and delivered as a partnership between; Public Health Localities and Primary Care Team, LCC Mobile Community Hub Team, LCC Housing and Better Together led by Space 2.

It was developed in response to discussions had at the Gipton Neighbourhood Improvement Board (GNIP) in which several partners expressed concern around the impact of cost of living on people's ability to stay well, particularly in winter.

We know that socio-economic factors play a significant role in creating and exacerbating health inequalities. People's ability to effectively heat their homes, afford healthy food, access good employment and engage in enriching activities are just some of the factors that impact people's health and wellbeing. Winter can be a particularly difficult and costly time and also a time where health inequalities are exacerbated. Cold homes can cause and worsen respiratory conditions, cardiovascular diseases and poor mental health; conditions which are already at an increased prevalence in Gipton.

This series of events aimed to help local residents to access practical support and guidance around; energy efficiency, debt, employment, cardiovascular and respiratory health, mental health and social isolation, in venues as close to home as possible.

Venues included; Oakwood Lane Surgery, Briarsdale Croft, Denbigh Heights and Church of Epiphany.

We were fortunate to receive a grant from the Inner East Community Committee to provide food at the final event which is due to take place at the Church of Epiphany on Thursday 22<sup>nd</sup> February, 1:30-4pm.

### **Seacroft Blood Pressure Awareness Project**

This project has been designed by Seacroft LCP partners; LCC Public Health Localities & Primary Care Team, Seacroft PCN, LS14 Trust, Space 2 and LCC Public Health Long Term Conditions Team.

High blood pressure or hypertension is often referred to as the 'silent killer' because it may present no obvious symptoms, however persistent high blood pressure significantly increases the risk of strokes and heart attacks. In the UK, around 50% of strokes and heart attacks are associated with high blood pressure.

In Seacroft, whilst the prevalence of diagnosed hypertension remains similar to the Leeds average, the prevalence of strokes and cardiovascular disease is higher than the city average. Moreover, the factors that increase people's likelihood of hypertension, such as smoking and living with obesity are also of increased prevalence in area, suggesting that hypertension may be going unnoticed in the community.

The overarching aim of this project is to raise awareness and support the early identification of hypertension within the Seacroft community using an integrated model of care. For those who are identified as hypertensive, the secondary aim of the project is to support people to manage and reduce their blood pressure by taking a person centred approach, in which the individual is supported to engage with Primary Care and the wide range of activities on offer within the community which supports living well.

The project will start in April 2024 and will run until April 2025. More information will be circulated prior to the project launch.

For more information please contact Jess Dewhurst [Jessica.dewhurst@leeds.gov.uk](mailto:Jessica.dewhurst@leeds.gov.uk)

## **City wide information**

### **Update on Food Resilience toolkit Webinar**

Food Wise Leeds, Food Aid Network and Leeds City Council would like to invite you to the Building Food Resilience Webinar on Thursday 29<sup>th</sup> February, 2 – 3.30pm. The purpose of this webinar is to give food aid providers the opportunity to share and learn from each other and understand what key information needs to be included in the planned update for the Building Food Resilience Toolkit (due Summer 2024).

The Building Food Resilience toolkit was designed in 2021 to offer practical help to frontline workers, volunteers and organisations providing or looking to provide food aid to people experiencing food insecurity. The toolkit includes information on what food aid provision and resilience is, signposting to services that can offer support service users and useful information for food aid providers to help deliver effective practice. Now in 2024 we want to review the toolkit and ensure it contains the right information that is required by providers. The webinar will include a number of speakers who will share their experience of providing food support and will conclude with some breakout time for projects to meet each other and directly discuss information that is needed to support effective signposting and delivery. A full agenda will be announced shortly. If you wish to attend the webinar, please contact Katie Tucker - [Katie.Tucker@leeds.gov.uk](mailto:Katie.Tucker@leeds.gov.uk) who will provide access to the zoom link. Contact [Emma.Strachan@leeds.gov.uk](mailto:Emma.Strachan@leeds.gov.uk)

## **Citywide messages Community Committee Reports**

### **Winter Messaging**

Whilst exposure to cold weather can affect anyone, some people are particularly at risk.

A reminder of the key messages:

- check on family, friends and neighbours who are at higher risk of becoming unwell.
- Check the weather forecast and the news.
- Make sure you have sufficient food and medicine.
- Take simple measures to reduce draughts at home.
- Heat the rooms you spend most time in, to 18°C if you can.
- Keep bedroom windows closed.
- Wear multiple layers of thinner clothing.
- If you're eligible, get vaccinated against flu and Covid.
- Get help if needed. Call NHS 111 or in an emergency 999

A winter comms toolkit is available which includes public and workforce facing copy and assets for social media, bulletins etc.

### **Cost of living support**

The Leeds City Council Cost of Living page signposts to support and advice on everything from welcome spaces to seasonal health advice.

### **Flu and Covid update**

Recent data from UKHSA shows that Covid rates have begun to decrease. It is still possible to book flu and Covid vaccinations at local NHS vaccination services, such as pharmacies or walk-in sites.

Everyone aged 65 and over, pregnant women, and individuals with certain long-term health conditions are eligible for free flu and Covid vaccines. Vaccine uptake amongst pregnant women is particularly low and they are encouraged to book their vaccines.

The Covid vaccination programme closes on 31 January. The flu vaccination programme closes on 31 March.

### **Norovirus**

Rates of norovirus are rising. It is important to remind people that if they have been sick with vomiting and diarrhoea, they should avoid visiting hospitals and care homes, and not return to work or school, until 48 hours after symptoms have stopped. Hand gels do not kill norovirus, so handwashing with soap and warm water is best.

### **Health Effects of Climate Change report**

UKHSA has published the fourth Health Effects of Climate Change in the UK report which provides evidence, analysis and recommendations based on climate change projections.

### **Home Energy Help**

A home upgrade grant scheme has been launched. Leeds City Council is giving upgrades to homeowners, renters and landlords that don't have gas central heating. Eligible homeowners will receive upgrades free of charge. Eligible landlords will receive a two-thirds discount on upgrades. A new web page has also launched, giving advice on making your home more energy efficient.

### **Asset Based Community Development**

Since its launch in 2013, a key aim of Leeds City Council's Asset Based Community Development (ABCD) programme has been to shift power back into the hands of local communities and residents and provide them with the support and tools they need to make meaningful change in the areas they live.

A special event held last October to mark the programme's 10-year anniversary provided over 150 attendees, including partners and stakeholders, with the opportunity to reflect on what has been achieved through ABCD in Leeds but to also look to the future.

### **Rising cases of measles**

Cases of measles are rising, particularly amongst teenagers, young people and unvaccinated / under vaccinated communities. Measles is very infectious and can spread rapidly if people have not had at least one dose of the MMR vaccine.

The MMR vaccine is available free on the NHS whatever the person's age.

## **Training and Development**

### **Want to know more about... Just one more**

**14 March, 2.00 to 3.00pm**

This campaign aims to encourage people to increase their vegetable intake by “just one more” portion per day.

The webinar is suitable for anyone who promotes healthier eating as part of their role including early years, schools, healthy holiday providers, youth clubs, workplaces, and community groups working with all ages.

### Local Care Partnership Update

### **York Road**

#### **Digital Health Hubs**

Chris Bamber continues to have a positive impact through the digital inclusion work, employed by The Old Fire Station but in a post that covers the whole of York Rd LCP, he is able to support a wide range of partners with their digital inclusion work and have an impact on communities across the Inner East area. Current work includes a regular drop-in at The Old Fire Station and outreach sessions in some of the tower blocks. This role was originally funded until the end of March through Health Inequalities. 100% Digital Leeds has managed to find some temporary funding to extend until the end of 2024 but we need funds beyond then to continue this important work.

#### **Seacroft and surrounding areas**

#### **Domestic Violence and Abuse**

There is active discussion around positive relationship awareness and education for young people – public health is supporting mapping what is currently happening and understanding any gaps. This preventative work feels really important.

They key questions to be asked include–

1. What are you doing around positive relationships education?
2. What is working well?
3. What could be improved, or have you identified any gaps?
4. What are your thoughts around the ‘train the trainer’ Public Health resource which could be co-designed and offered in Seacroft.

The need for this work is underpinned by:

- Domestic abuse is a long-standing priority for the Seacroft LCP.
- Challenges around a lack of positive relationships education were highlighted within a local community group for girls of secondary age. This included online safety and grooming.
- Data suggests high levels of domestic abuse in Seacroft, and this is just what’s reported of course.
- Community intelligence has revealed that cycles of domestic abuse are taking place, where children witness it within their family as they grow up, and then accept this as normal behaviour when they form their own relationships. Could more education around positive relationships challenge this cycle?
- The topic was raised both as a challenge and also an opportunity for action within the Seacroft Priority Ward Partnership Plan workshop and is therefore included within the long term plan.

Work with young males is also considered to be valuable within this work.

As well as the work around young people – the LCP is also thinking about older people and DV.

## **Cost of living**

Upcoming Gipton Winter Well Being Roadshow at the Old Fire Station on 22<sup>nd</sup> February.

We at Seacroft will also be updating material around living well in Seacroft, as well as practical information to support dying well in Seacroft.

## **Dying Well in Seacroft**

Focus around people at the end of life with a respiratory disease and reducing unplanned admissions to hospitals – as part of the Leeds Healthy Plan. Looking at case studies and understanding current issues. Recent workshop held at Kentmere Community Centre to pool knowledge and ideas across 3 LCP areas.

## **Hypertension Project (NEW and in development)**

In the UK, high blood pressure (hypertension) is the third biggest risk factor for premature death after tobacco smoking and poor diet and is the largest single known risk factor for cardiovascular disease and related disability with 50% of heart attacks and strokes associated with the condition. It is estimated that 32% of adults living in England have high blood pressure and as symptoms are rarely experienced 4.2 million people are living with undiagnosed high blood pressure..

Aim of this work:

- To raise awareness and support the early identification of hypertension within the community using an integrated model of care.
- For those subsequently diagnosed with hypertension to be supported to reduce their BP reading by 10 points within 12 months of diagnosis

The project will look at offering blood pressure testing kit within community settings and loaning people devices, as well as proactive identification of people through data and connecting people with the many brilliant activities happening locally.

It's hoped that a whole neighbourhood approach to tackling hypertension together can be taken forward. More info to follow.

## **HATCH LCP**

### **Cost of living and engaging with grass roots organisations and groups**

The January HATCH LCP meeting was a vibrant session at CATCH-where another round of grant holders were invited to give an update on their cost-of-living initiatives - funded via the health inequalities community grant funding opportunity.

There are lots of opportunities to create a legacy from the session in line with feedback from those who attended the session.

### **Food**

Work is ongoing looking around the food topic – exploring healthy eating and health and well being - feeding in thoughts to the Leeds Food Strategy.

### **Domestic Violence and Abuse**

Wider links being established with West Yorkshire police, exploring how best to work together around this topic. The LCP will be focusing campaigns this year around young people and also men.

## 6. Children & Families – Champion Councillor Katie Dye

### Youth Service Update

The delivery of our Youth Work is underpinned by the 11 priorities highlighted in the Children and Young People’s plan 2018-2023, the Leeds Vision for Youth Work, and the shared priorities of the Safer, Stronger Communities City plan 2021-2024.

Whilst the 11 priorities are embedded throughout our delivery, for the purpose of the report we will be providing a summary of the Youth Work delivered in line with the most frequently identified priorities, these priorities are highlighted below. The report highlights the top three most frequently identified priorities across the Inner East and provides a summary of how Leeds Youth Service deliver programmes and provision that are underpinned by the six pillars of Leeds Vision for Youth Work whilst ensuring operational delivery supports the Safer, Stronger Communities Plan.

<b>Children and Young Peoples Plan 2018-2023</b>			
<b>Priority</b>	<b>Primary Focus</b>	<b>Secondary Focus</b>	<b>Total</b>
Reduce Crime and Anti-Social Behaviour	150	70	220
Support Young People to make good choices and minimise risk taking behaviours	69	87	156
Ensure the most vulnerable are protected	18	78	96
<b>Leeds Vision For Youth Work</b>			
Youth Work will be valued and understood	Participation and Empowerment	Collaboration	
Respect and Positivity	Inclusiveness, Equality, and Diversity	Quality, Safety, and Wellbeing	
<b>Safer, Stronger Communities Plan 2021-2024 (Shared Priorities)</b>			
ASB and Public Order	Domestic Violence and Abuse	Hate Crime	
Illicit Drugs and Substance Use	Offending Behaviours	Organised Crime and Street Gangs	
Exploitation and Radicalisation	People with multiple needs (Street Users and Sex Workers)	Violence and Sexual Crime	

**Reducing Crime and Anti-Social Behaviour** is integrated throughout our Youth Work practice and weekly provisions. This work can take many forms and is something that we continually adapt in line with communication with Young People, partners, and communities. Youth Work is delivered to empower and prevent whilst also respond as and when identified. The very core of our work with respect to Reducing Crime and Anti-Social Behaviour is about ensuring Young People have the education, understanding, and empowerment to make positive decisions. This work is strongly aligned to the shared priority of addressing ASB and public order within the Safer, Stronger Plan. There are several weekly examples of this within our Core Offer via programming of issue based support, guidance, and activity.

Through weekly and bi-weekly centre based provisions at Nowell Mount, Richmond Hill, Ebor Gardens, Dennis Healey, Crossgates Community Centre, The Bilal Centre, The Compton Centre, and Henry Barran, there are regular opportunities to divert Young People away from negative behaviours into a safe, supportive environments. We have also delivered extensive work alongside partners from West Yorkshire Police (Leeds East) who have attended a range of our regular provisions to continually develop relationships with local Young People. In recent weeks we have also partnered with a number of organisations to deliver sessions underpinned by lived experience, providing

opportunity for Young People to hear real life examples from those who have had a past involvement in criminality and the impact and consequence this has had upon their lives.

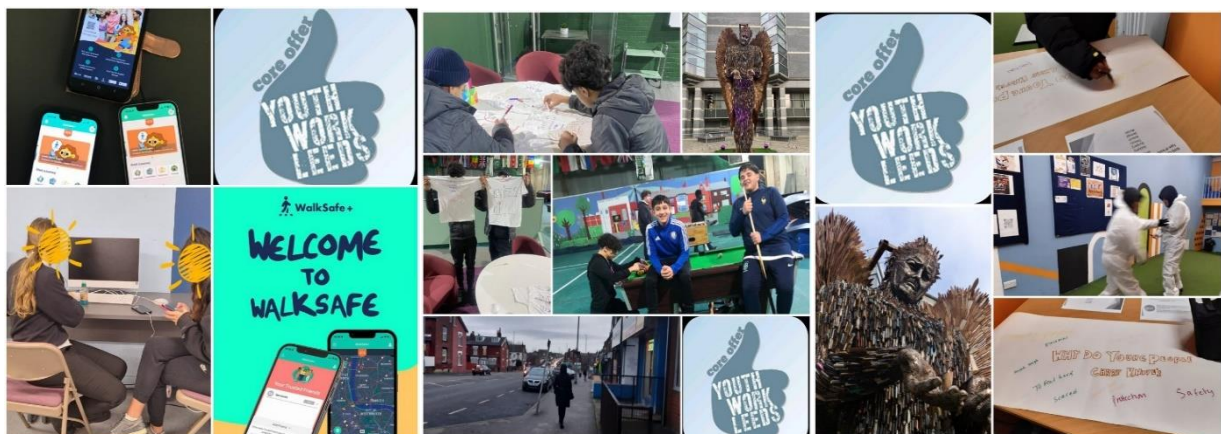
In addition to our centre based provisions, our Youth Work team deliver a range of Detached and Mobile Van Youth Work provisions across the area. This is programmed to target key areas across the wards whilst also ensuring there is capacity to respond to emerging needs. Youth Workers have engaged with local Young People aswell as members of the local community to address these ongoing issues. Our team have continued to link in with a number of partners from across all wards to ensure our Youth Work teams are diverted and placed in the areas most in need.



### Support Young People to make good choices & minimise risk taking behaviours.

Our core offer to Young People is built upon the foundations of voluntary engagement, this is just one of the many factors that creates environments where Young People are open to discussions and learning, not only developing their current knowledge and understanding but actively challenge current and previous decision making. Our Youth Work Teams are in a privileged position to be able to empower Young People and deliver sessions that really focus on the impact of our choices whilst education Young People on the importance of self-safety.

Recent examples of this would be taking information about the Walksafe application to several sessions across the Inner East. Many Young People we engage will often frequent the city centre and by having access to the app they have an increased level of knowledge and understanding with respect to safe spaces and places in which they can access support. We have placed a heavy focus on the February Intensification month aligned to Project Shield. Sessions focused on the impact and consequence of knife crime have been delivered across the whole of the area with awareness raising sessions, sessions focused specifically on the dangers of knife crime, session focused on the impact of stress, anger, and peer pressure and sessions focused on the impact of role models and what we should look for within positive role models.





## **Ensure the most vulnerable are protected**

This was our third most addressed priority this quarter and this is down to much of our work leading up to the Christmas Period. Wellbeing packs were handed out to Young People from across the Wedge, these packs included a range of resources which Young People could both use through the two week closedown aswell as long term should they need any out of hours support. Our Inner East Girls Group continues to go from strength to strength, each session consists of having a safe environment for Young Women and Girls to speak about any issues they may have whilst also engaging in a range of targeted issue based work. We have also done a significant amount of work to raise awareness of Young Carers across the service. It has been identified that that the tracking of Young Carers across a number of services needs to be improved and after having Leeds Young Carers present at both our service managers meeting and our Celebration Of Youth Work Conference, Leeds Youth service has welcomed the opportunity to work alongside Leeds Young Carers Service to integrate several initiatives and work streams within our core offer. A recent example of this would be engaging Young People in a current logo design competition for the service, in doing so Youth Workers were able to inform Young People about what it means to be a Young Carer and the support available, this had lead to the registration of a number of Young Carers across our the wedge.

## 7. Employment & Skills – Champion Councillor John Tudor

### Universal Credit

The number of people who are claiming Universal Credit (UC) due to unemployment, as of November 2023, in the Inner East Community Committee area is 11,305. This is an increase of 100% since March 2020, pre-pandemic levels, and an increase of 55 claimants on the previous month.

The table below shows the number of people claiming Universal Credit (Not in Employment) in the Inner East Community Committee area and by ward.

	Universal Credit Claimants (Not in Employment) 16-64yrs					
	March 2020		October 2023		November 2023	
	Number	Rate*	Number	Rate*	Number	Rate*
Leeds	23,631	4.5%	48,825	9.4%	49,108	9.4%
<b>Inner East</b>	<b>5,658</b>	<b>10.3%</b>	<b>11,250</b>	<b>20.4%</b>	<b>11,305</b>	<b>20.5%</b>
Burmantofts & Richmond Hill	2,068	11.0%	3,811	20.2%	3,819	20.3%
Gipton & Harehills	2,210	10.6%	4,638	22.3%	4,641	22.3%
Killingbeck & Seacroft	1,380	8.9%	2,801	18.1%	2,845	18.4%

\*Rate shows the number of claimants not in employment as a percentage of the working age population

### Employment and Skills (E&S) Activities and Provision

The table below shows the number of people supported by the E&S Service from the Inner East Community Committee area and by ward.

	Accessing Services		Into Work		Improved Skills	
	2023/2024 (Apr – Dec)	2022/2023 (Apr – Dec)	2023/2024 (Apr – Dec)	2022/2023 (Apr – Dec)	2023/2024 (Apr – Dec)	2022/2023 (Apr – Dec)
<b>Inner East</b>	<b>2,417</b>	<b>2,615</b>	<b>407</b>	<b>409</b>	<b>778</b>	<b>755</b>
Burmantofts & Richmond Hill	911	898	136	129	292	275
Gipton & Harehills	1,140	1,245	190	198	347	340
Killingbeck & Seacroft	366	472	81	82	139	140

During April – December 2023

- 9,799 people accessed the Service, 2,417 of whom were residents from the Inner East.
- Supported 2,457 people into work, 407 of whom were residents from the Inner East. Customers were supported into work across all sectors with the largest numbers in construction, health and care including childcare, manufacturing, ICT, digital and comms.
- Supported 2,975 people to improve their skills, 778 of whom were from the Inner East.

### Leeds Employment Hub

A single point of contact for all funded programmes and Jobshops which provides tailored and comprehensive support into employment or education to all Leeds residents. Employment Hub Advisors deliver the programme by providing one to one support, tailored preventative and remedial support to Leeds residents who are disadvantaged in the labour market. The Employment Hub Advisors are co-located within the Jobcentre Plus centres across the city. Further funding has been secured which will see the role of the Advisors continue until at least March 2025.

All Jobshops are open, 5 days a week for face-to-face appointments which includes Seacroft, Burmantofts and Compton Community Hubs. There is a pop up Jobshop at Burmantofts Community Hub, Monday, Wednesday and Fridays 9:00 - 17:00.

The Community Hub Mobile bus runs Monday - Friday, the schedule stops include:

- The Old Fire Station, Gipton Approach, LS9 6NL Thursday 9:30 – 12:00
- Windmill Health Centre, Whinmoor Way, LS14 5BD Friday 9:30 – 12:00

- East Park Medical Centre, East Park Road, LS9 9JD Friday 13:00 – 15:30

### **Community Learning**

Community Learning provision continues to deliver an effective, broad, and inclusive curriculum to support the continuation of learning in collaboration with subcontracted partners. Courses were delivered through a range of models which includes face to face within a community setting, online and through distance learning, opening new opportunities for adults to learn and develop their confidence.

Between April - December 2023, 3,554 people started a Community Learning course. There were 559 courses delivered at 118 venues, in addition, there were 17 courses delivered on-line. In the Inner East area, there were 119 courses delivered at 22 venues, and 798 people started a course.

For further information on courses available both online and face to face at community venues, please visit: <https://leedsadultlearning.co.uk>

Employment & Skills had a full Ofsted Inspection from 11<sup>th</sup> – 14<sup>th</sup> December 2023. The Community Learning provision was graded Outstanding across all areas, the first Local Authority to achieve the Outstanding judgement since the new Education Inspection Framework (EIF) commenced in September 2019. The inspectors found:

- Adult learners gain valuable skills, which often transform their lives.
- They benefit from a highly ambitious curriculum that meets a diverse range of needs across the city, widens participation in learning, improves life chances and develops stronger communities.
- Subcontractors are carefully selected with expertise in community learning to enable them to meet the needs of specific local communities and groups, and to meet skills priorities.
- Subcontractors deliver highly effective, bespoke programmes to support the most vulnerable learners to access education.

The first event Community Learning Celebration Awards took place on the 18<sup>th</sup> July 2023 at Leeds Civic Hall. This event celebrated the accomplishments of all learners and tutors and embraced their future progression into further/high education, volunteering and/or employment.

### **Multiply**

Multiply is the free, government funded, adult maths support programme, part of Levelling Up, Skills for Life. The programme is aimed at helping adults to improve their maths skills and boost their number confidence. E&S are developing and delivering courses and activities through partnerships with community organisations and other partners; to help people use numeracy to manage their money; for parents wanting to increase their numeracy skills in order to help their children.

### **Delivered Events and Activities**

- **Financial Wellbeing Event** took place 13th July 2023 at Burmantofts Community Hub to residents concerned with the rising cost of living. 16 Partner agencies attended including Credit Union, Yorkshire Water, DWP and Zero Waste Leeds who provided support and advice around Housing, access to employment/training, money management and how to help reduce fuel bills.
- **Security Recruitment Event** at the City Centre Community Hub held on the 27<sup>th</sup> July 2023. Advisors engaged with 53 customers and DWP for a Sector-Based Work Academy Programme (SWAP) Fair on 27<sup>th</sup> September 2023.
- **Connecting Communities to Health and Care Careers** 19 Information and Assessment Sessions were delivered in the priority wards from July to December 2023. 197 people engaged in the sessions of whom 82 were referred to pre-employment courses, 23 referred into We Care Academy and 68 were referred for Numeracy and Literacy support via Community Learning.
- **LCC Highways and Transportation** Information and recruitment sessions delivered at Seacroft, Hunslet and Yeadon Community Hubs to help improve recruitment within the locality of their depots. The session provided an overview of vacancies and an opportunity for attendees to talk to Highways employees. Support provided by Employment Advisors with applications for the roles or seeking alternative employment. Engaged with 22 customers.

- **School and College Engagement and Delivery** during July – December 2023, delivered 55 activities to a total of 5,660 young people, 596 parents and carers and 129 teachers. This included 48 Apprenticeship Awareness sessions delivered at 27 schools to a total of 3,730 young people, 518 parents and 119 teachers. The sessions were delivered at the following schools in the East of the City:
  - Abbey Grange C of E Academy, Allerton Grange, Allerton High School, Bishop Young Academy, Boston Spa, Cardinal Heenan Catholic High School, Corpus Christi, Mount St Mary's, Roundhay High School, Temple Moor High School Science College, The Temple Learning Academy, Wetherby High, Springwell Academy, Ruth Gorse Academy and Leeds College of Building.
- **Getaways Girls** delivered sessions for young women requiring support who are seeking employment, training, or volunteering, those attended are now receiving individual support.
- **A tech careers information session** was delivered at Leeds Maximus office on 6<sup>th</sup> September 2023. This session provided information to 15 employment advisors and team members to let them know about tech career options and entry routes to help support their customer groups into sustainable employment options in the tech sector.
- **Black Young Professionals** event held at the Infinity Works office in Leeds on 6<sup>th</sup> September 2023, 25 people attended. The team promoted upcoming events and support for finding employment in Leeds, the aim was to encourage a diverse audience to consider digital and creative careers.
- **Leeds Tech Careers Launchpad 3.0 - Getting Hired in Tech** took place at BJSS office in Leeds City Centre on 20<sup>th</sup> September 2023. Guest speakers from BJSS, Glean and NHS LTHT joined the session to provide guests with knowledge and tips on getting hired in tech roles. 40 people attended
- **The Leeds Digital Careers Fair (LDCF) 2023** took place on 26<sup>th</sup> September 2023, at the Leeds First Direct Arena. The event was aimed at those new to a career in tech and digital. 4,000 attendees were given an opportunity to engage with a range of tech training providers and employers to find out about the diverse career opportunities available, plus attend interesting talks and demonstration sessions.
- **Virtual Careers Expo (LDCF)** as part of Leeds Digital Careers fair, a virtual careers expo was launched on 26<sup>th</sup> September until 31<sup>st</sup> December 2023. This was an immersive platform for young people to access careers and skills information and opportunities in Leeds, with a focus on our emerging sectors. A mini roadshow also took place at 3 higher education venues to showcase the virtual careers expo to students and encourage sign ups, allowing more students access to the emerging sector careers information.
- **Reducing Re-Offending:** Jobs Fair was delivered at HMP Wealstun 28<sup>th</sup> September 2023. 7 organisations attended with Advisors engaging with 60 prisoners to offer support on their release.
- **SEND Employment Forum** was launched by E&S on 17<sup>th</sup> October 2023 at the City Museum. 100 people attended and covered:
  - How to help young people with additional support needs take their first step on the career ladder
  - Pathways to employment, including supported internships
  - How you can help to build an inclusive workforce across the city
  - How to sign up for a supported internship
- **UK University Search Jobs Fair** held at Elland Road on 17<sup>th</sup> October 2023. 480 young people aged 15-19 attended. Delivered a presentation on benefits of doing an Apprenticeship to approximately 180 of the attendees.
- **Jobs Fairs** Community Hubs working in partnership with DWP delivered the following:
  - Youth Jobs Fair at City Centre Hub 27<sup>th</sup> October 2023.
  - Jobs Fair at Kirkgate Market 20<sup>th</sup> October 2023.
  - Over 50's Jobs Fair at City Centre Hub 22<sup>nd</sup> November 2023
- **Have a Go Fortnight** as part of the national Lifelong Learning campaign, local partners delivered taster and have a go skills sessions from 6<sup>th</sup> November 2023 to 17<sup>th</sup> November 2023. The focus was on digital and other priority sector skills as part of the fortnight of activities, aiming to encourage adults to undertake further learning to help progress their career. 4 skills taster sessions took place with 26 people attending the in-person and on-line sessions.

- **Refugee Jobs Fair** held at the Civic Hall on 7<sup>th</sup> November 2023, 71 refugees and migrants attended, with lots of previous experiences and transferable skills.
- **The BIG Social Care Jobs Fair** was delivered on 15<sup>th</sup> November 2023 at the Bridge Community Church, Burmantofts. The event was co-ordinated in partnership with We Care Academy and provided information and opportunities for people interested in accessing roles within the care sector. 304 visitors attended. 27 employers provided opportunities offering interviews, collected CVs and distributed applications form. Employers included Children's Residential, private care homes and Adult Social Care. E&S Advisors also provided support, 10 job offers were made on the day.
- **Leeds Creative Skills Festival** returned to the Leeds first direct arena on 20<sup>th</sup> November 2023 with exhibitors showcasing opportunities in the creative and cultural sector. The event offered the 3,081 visitors a chance to speak to 63 exhibitors including training providers, colleges and universities who offer creative courses; talk to employers; attend interesting speaker sessions to learn about creative careers, skills and pathways; and also offered interactive activities. 9 Leeds schools block booked students and were sent the targeted LCSF23 presentation prior to the event.
- **EME (Elected Home Educated) Community Forum** held on 23<sup>rd</sup> November 2023 at Civic Hall, attended by parents/carers and young people to gain a better understanding of various opportunities available to them in Leeds. Offered support and guidance for post 16 options through E&S.
- **Migrant Access Project** 8 week facilitated training programme for 14 migrants new to Leeds. The event took place at Dewsbury Road Community Hub with guest speakers sharing information about their services which included DWP, West Yorkshire Police (WYP), Prevent and Employment and Skills (E&S).

### **Planned Events and Activities**

- **Social Care Recruitment Events**, in partnership with We Care Academy, will take place at Vale Circles on 19<sup>th</sup> January 2024 and East Recovery Hub on 24<sup>th</sup> January 2024. The events will support the recruitment to Support Worker and Case Officer roles across the city. Advisors will be attending to support delivery.
- **Careers in Catering** recruitment information and interview sessions planned for 24<sup>th</sup> January 2024 at City Centre Community Hub to support promotion of kitchen assistant posts in schools across the city.
- **Leeds Apprenticeship Recruitment Fair** will take place on 5<sup>th</sup> February 2024. Visitors can find out more about Apprenticeships and meet with providers and employers. Over 100 organisations have booked stands to exhibit at the event and approximately 6,000 visitors are expected on the day.
- **Apprenticeship Recruitment Fair Community Events** community based information sessions will be delivered early in the new year within the priority wards to support the engagement of residents with the Leeds Apprenticeship Recruitment Fair 5<sup>th</sup> February 2024. The sessions will give those attending the opportunity to speak to E&S staff about Apprenticeships and what to expect from the recruitment fair.
- **Smart Works Jobs Fair** at Leeds Beckett University Students' Union planned for 8<sup>th</sup> February 2024. This event will provide information on vacancies, Apprenticeships and supported internships to all attendees.
- **Migrant Access Project** 8 week facilitated training programme for migrants new to Leeds, starting January 2024. The advisors will attend the event taking place on 9<sup>th</sup> February 2024 at Compton Community Hub with guest speakers sharing information about their services.
- **Connecting Communities to Health and Care Careers** fortnightly Information and Assessment Sessions will be delivered at sites across the priority wards and City Centre Hub. The sessions will continue to support recruitment to roles within the Health and Care sector, including Adult Social Care, Children's Residential Practitioner and Administrative roles. Additional Community Learning provision will also be in place.
- **Reducing Re-Offending** a planned pilot to offer support to prisoners due to be released into Leeds from HMP Wealstun will be offered early in the new year. Advisors will establish contact with the identified group prior to release to enable support in accessing employment and training opportunities when resettled.

- **Digital skills bootcamps with UA92 and Microsoft** on-line and Tech North training centre. Working with UA92 and Microsoft to support 2 digital skills bootcamps to be delivered to Leeds residents, to upskill them in areas of Cloud and Data. On completion of the 10-week bootcamp, graduates will be supported to gain employment in the tech sector.

### **Employer Engagement**

Within the last year the Service has supported 385 new businesses including recruiting new staff, providing support for staff facing redundancy, developing initiatives to address staff shortages and filling a high number of vacancies within key sectors.

E&S provides a school brokerage service 32 businesses provided activities to approximately 1,680 young people at 6 events. The events included a careers fair, 4 mock interview sessions and an employability session.

A Business Sustainability Event was delivered on How to Build a Greener Future, in partnership with Leeds Beckett University and West Yorkshire Combined Authority E&S delivered the first Business Sustainability Breakfast Event in Leeds with over 20 businesses signing up to attend. Guest business speakers included Dawn O'Keefe, Co- founder and Director at Shine and Jannice Dye, HR Manager at C-Capture shared their green journey experiences to date and plans for the future. Businesses attending the event found out about a range of support options available:

- Measuring their environmental impact, understanding how climate change might affect their operations and taking steps to improve energy efficiency or flood resilience measures.
- Ensuring they attract, develop and retain a greener, healthier and inclusive workforce.
- Accessing research and academic expertise to enhance their business.

The Employment and Skills Business Newsletter that provides information and resources to support businesses' workforce needs across the city, also including the upcoming sustainability breakfast events, Leeds Inclusive Employers Network and T-Level support. The newsletter will be published every 2 months to approximately 5,000 subscribers. To find out more please visit:

[www.inclusivegrowthleeds.com](http://www.inclusivegrowthleeds.com)

## 8. Burmantofts & Richmond Hill – Priority Ward

### Burmantofts & Richmond Hill Residents Meetings

The Burmantofts & Richmond Hill Residents meetings commenced last year; these take place quarterly. The meetings alternate between Richmond Hill Community Centre and Ebor Gardens Community Centre.

The public meetings which are chaired by local councillors give residents an opportunity raise issues which are important to them, to hear about local initiatives and get updates from council services and local organisations. So far attendance has been good and we hope to build on this over the coming year.

The last meeting took place on the 8<sup>th</sup> January at Richmond Hill Community Centre. The meeting included updates on the BRH Community Anchor Network and local policing. Residents raised concerns and frustrations about the bus service in the ward, the meeting also received a positive update from Litter Free Leeds about local community litter picking in the ward. Prior to the meeting proper, Councillors had organised a drop-in surgery so residents could raise any individual issues they need support with directly with representatives from a range of Leeds City Council Services.

The next meeting will take place on the 11<sup>th</sup> March at Ebor Gardens Community Centre at 6pm. At this meeting Alison Lowe the West Yorkshire Deputy Mayor for Policing and Crime will be attending, followed by services to provide updates: West Yorkshire Police, Leeds Anti-Social Behaviour team, Property Management (Repairs) and Active Leeds.

### East End Park New Bike Track Launch

Councillors allocated funding to re-vamp the overgrown off-road bike track in East End Park. The resurfacing and re-grading work has taken place over the winter. A launch event is planned for Saturday 16<sup>th</sup> March at 1pm.

Partners including British Cycling and LS–Ten will be there on the day to offer taster sessions around cycling and roller-skating. Leeds Bike Mill will also be on hand with their qualified mechanics to carry out basic servicing needs. Bikes will be fixed on a first come first served basis and children must be accompanied by an adult.

Kit donation, prizes, community conversation, refreshments and much more will be available on the day!



## Community Cycling Event

Active Leeds and the Walk It Ride It project team arranged a “get to know” community cycling event on the 21<sup>st</sup> February. This was the perfect opportunity to learn about what cycling offers are available in Leeds and to discuss the barriers, accessibility, and solutions for cycling. Two of the people featured at the event shared their stories of being “referred” into Cycling as part of the Burmantofts and Harehills Active Travel Social Prescribing project.



## Burmantofts Communities Festival & Lark in the Park

Last summer, local partners, the Breeze Team and Councillors came together to re-establish the long standing Burmantofts Community Festival and Lark in the Park. Neither had not taken place since the Pandemic.

Both events were a great success with over 2,000 people attending generating a really good feel-good factor for the local community. Burmantofts and Richmond Hill Councillors have agreed to support both events this year, early planning led by Breeze is underway.

The dates the events will take place are:

- Burmantofts Communities Festival - Saturday 8<sup>th</sup> June on Oxton Fields
- Lark in the Park Saturday 6<sup>th</sup> July at East End Park.

Local organisations play a big role in these events in terms of activities, food and entertainment. For further information or to get involved contact The Breeze Team [andrew.cartwright@leeds.gov.uk](mailto:andrew.cartwright@leeds.gov.uk)



## 9. Gipton & Harehills – Priority Ward

### Off Licence Reviews

The Safer Stronger Communities Team continues to work in partnership with other key council services and external partners to try and tackle problems with illicit sales from off-licences in Harehills and the associated anti-social behaviour and under-age drinking and smoking which has been a huge concern the area for some time.

Following a series of test purchasing action days by West Yorkshire Police and Trading Standards, applications to challenge the licenses of eleven local off-licences were submitted based on a range of concerns around the sale of illicit alcohol and tobacco products and in some cases the sale for these items to underage children.

The Safer Stronger Communities Team have worked with ward Councillors to lend their support each of these reviews and to date this has led to eight off licencing having their licence fully revoked with a further three being handed additional conditions to their licence. This represents a big step forward in terms of tackling the issue of such illicit operations and sends a clear message to the local community that significant action will be taken to tackle this type of activity.

### CommUnity Harehills – (Clear, Hold, Build)

A Neighbourhood Improvement Partnership “CommUnity Harehills” has been established to support a joined-up approach to tackle some of the big issues which affect residents of Harehills.

The Clear, Hold, Build approach has been instigated and led by West Yorkshire Police has had some good early successes in terms of enforcement around drug dealing, drug supply and the sale of illicit cigarettes and alcohol. The challenge and role for the Neighbourhood Improvement Partnership is to develop initiatives which support residents of Harehills long term – The Build part. Early priorities are emerging around support for young people, the environment and community involvement. Initial workshop discussions have highlighted the need to take an asset based approach wherever possible – in other words understand and build on the good things that Harehills already has including local organisations, venues, services, active citizens and community leaders.

The CommUnity Harehills Partnership has met 3 times now to establish the approach and agree the main priorities for joint action. The next phase will be to establish smaller working groups to develop and implement the actions.

Gipton and Harehills Councillors  
invite you to:

# HAREHILLS RESIDENTS MEETING

27th February 5.30pm-7pm  
@ The Compton Centre

Local councillors, the West Yorkshire Police  
Neighbourhood Policing Team and council officers from  
key council services will be in attendance to update you on  
their work in Harehills and answer any questions or  
concerns on local issues that matter to you.

WEST YORKSHIRE POLICE  
CommUnity Harehills  
Leeds CITY COUNCIL

On February 27<sup>th</sup> Ward Councillors, the police and officers from various council services will host a meeting at the Compton Centre which will be an opportunity to update residents on activities in the area as well as provide a space for residents to ask any questions or raise any issues related to their community.

### **Gipton Winter Wellbeing Roadshow**

Wellbeing funding awarded by Gipton and Harehills Councillors was used to deliver a winter wellbeing event at The Church of the Epiphany in Gipton which gave residents easy access to advice, guidance, and support around cost of living and winter wellbeing.



A range of support services were in attendance including: Yorkshire Water; Green Doctors; Leeds Health Awareness; Money Buddies; Leeds Mind; illegal Money Lending Team; Behind Closed Doors; The Old Fire Station as well as LCC services including the Libraries Team, Housing and Public Health.

## 10. Killingbeck & Seacroft - Priority Ward

### Seacroft Community Hub

Leeds Libraries at Seacroft Community Hub has been busy with a range of events and activities to encourage young readers to engage with the library and embrace the joy of reading.

On Tuesday 13<sup>th</sup> February, children aged 8-12 attended 'The Book of Eternity', a musical performance written by acclaimed Children's author Claire Povey and produced by Northern Opera Group. This interactive show featured detectives working to track down clues in the library with the help of the young people, in order to find the rare and mysterious 'Book of Eternity.'

Lego Club is also back at Seacroft Community Hub in 2024, "Building a love of books together brick by brick", with the first of the monthly session commencing recently on Saturday 27<sup>th</sup> January, and running on the fourth Saturday of every month. Designed for children 5+, each session will take inspiration from books with a different theme and allow young people to unleash their creativity as they build their own adventure.



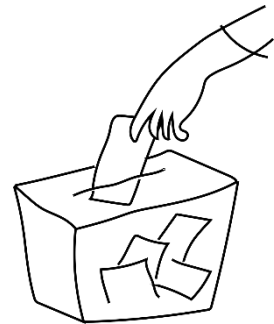
To keep in the loop about everything going on at Seacroft Community Hub, visit the hubs Facebook page at <https://www.facebook.com/SeacroftHub> or visit the hub during opening hours.

### Inner East Youth Summit:

The Inner East Youth Summit took place on Thursday 8<sup>th</sup> February, inviting young people from schools in the area to attend at Leeds Civic Hall. The event was very well attended, with pupils from Bishop Young Academy, Parklands Primary, and Cross Gates Primary representing Killingbeck and Seacroft ward. Primary school pupils learned about the local political system and democracy, and the numerous ways they can interact and influence decision from an early age.

Secondary school pupils held a mock community committee, the first of its kind at the Youth Summits. At the Committee, participants reviewed a range of applications, and as a group made decisions based upon the perceived positive impact to the local community. On the day, one of the key priorities that came out of the discussion was to support projects geared towards life-skill learning for children and young people.

Feedback from the event was extremely popular, with young people commenting positively on the range of activities available, the introduction of innovative ideas, and the opportunity to engage with elected members on a range of issues important to them and the local area.



### Kingsdale Court

Kingsdale Court is located within the heart of Boggart Hill Priority Neighbourhood and makes up around 11.5% of all homes within this Lower Super Output Area (LSOA) where deprivation levels are in the worst 1% nationally, as measured by the government's Indices of Multiple Deprivation (IMD).

Following Kingsdale Court being established as a priority for the Neighbourhood Improvement Board, colleagues in Land and Property, Regeneration, Housing Leeds, Legal and Finance are working collaboratively to achieve full council ownership of the site, manage the challenging environmental conditions and support tenants to be re-housed.

Since the initial acquisition of a portfolio of 40 flats in June 2021, 37 additional purchases have completed, resulting in current Council ownership of 77 out of 88 flats on site or 87% of the total units. In addition, the council also secured ownership of the freehold of the site in October 2022.

A further 8 leaseholders have accepted the council's offer to purchase and matters are progressing with legal. This will hopefully result in a position whereby the Council owns 85 out of 88 flats (97%) in the near future, leaving 3 still to be acquired. The Council is in contact with these remaining leaseholders and negotiations are being pursued. It is hoped that these will progress positively and reduce or negate the need for Compulsory Purchase Order proceedings.

## 11.HAP

The significant financial pressures on the Council, including the housing service, has been widely reported and there were several budget proposals were considered to meet significant budget pressures. On Wednesday 13 December the Council's Executive Board considered these proposals.

To ensure we make the savings required and to maintain as much budget as possible for core services, particularly investing in improvements to Council homes, the Council has agreed that HAP budgets are removed from 2024/25, along with associated staffing costs, resulting in a saving of £0.7m. As part of this proposal HAP meetings would not continue from April 2024.

The Inner East spent it's remaining HAP budget in January 2024 and has now come to an end. We are incredibly grateful to the tenants who have been involved in making the HAP a successful project for the last 10 years and would like to encourage all tenants to sign up to the Tenant Voice Panel so we may contact you for future involvement with decision making in housing leeds.

The IEHAP have funded in line with their priorities and have considered the funding of environmental and community projects and services that benefit our housing Leeds Tenants, in the wards of Burmantofts & Richmond Hill and Gipton and Harehills. The IEHAP was represented by two ward members, Councillors Luke Farley for Burmantofts and Richmond Hill and Cllr Ali Kahn for Gipton and Harehills.

### 1. Funding Priorities:

The 2023/24 Priorities are due to be agreed with panel members once Tenants have had an opportunity to return their SMART survey.

The current 2023/24 priorities of the panel are outlined in the 'Plan on a page'.

- Improve overall environment through listening to tenants and Housing officers' problems in the environment and rectifying with more bins and better bin stores and preventative measures for damage to the environment also providing communities with planters, recycling & litter bins. Support bids from Bloom Groups to help the area look more aesthetically pleasing.
- Promoting social activities i.e., gardening/litter picking/walking groups to improve residents' mental health and wellbeing whilst also helping to improve the environment and appearance of the neighbourhoods Support applications with other council teams, service providers and voluntary organisations to address social problems including burglary, ASB, drugs and domestic violence.
- Work with third sector organisations to make more use of community spaces. Encourage activities at such places to help lift morale and engage further. Improve community cohesion and inspire residents to lead communal activities.
- Support bids that will help tenants with IT, financial literacy, budgeting and general literacy and numeracy. Digital projects that will encourage tenants to get online.

### 2. Budget:

- Total Budget for 2023/24 of £41,722.41
- The total spend for the year to date is £41,722.41.

### 3. Projects:

23 projects have been approved by the panel this year's end.

1. To prevent cars blocking access to a bin store at St Augustine's Court – a no parking sign was installed.
2. To reduce the fly tipping at Shakespeare's Court- a new bin store was created.
3. To smarten The Avenue at Saxton Gardens Estate and make cost savings bushes were removed and areas regressed.
4. To encourage community involvement at the Briarsdales blocks they were installed with new tenant's noticeboards.
5. For residents to make the most of their outdoor space at the Denbigh's they were given a litter bin and a hose pipe.
6. A BBQ was provided for residents in St Augustine's court to come together as a community.
7. A new handrail has been installed at Boston Towers to improve the safety of the steps up to the blocks.
8. Tenants at the Brecons requested funding for communal plants for their planters.
9. Saxton Gardens Recycling stores were enlarged to accommodate an extra recycle bin.
10. Pembroke Grange has additional benches outside for tenants to enjoy together.
11. A little Library has been funded to be installed at Saxton Gardens.
12. Briarsdale Croft has new dropped curbs to reduce barriers for people with different abilities.
13. The AMAL Eritrean Community Group was awarded funds for football equipment.
14. Neath Gardens has received funding to reduce build-up of general waste.
15. Rookwood Vale has received new CCTV to deter the ASB in the area.
16. The Briarsdales were given new communal hallway matting.
17. Some funding was given to active leads to create the Lincoln Green Play Trail
18. Harehills bowling club will be able to install their defibrillator with the electrical improvements made to their building.
19. People with a criminal record will have hospitality and catering training whilst running a café at the Compton centre.
20. Neruka's Soup kitchen has been given funding for more cookery equipment.
21. Gipton Together was given funding for mirrors to be provided to help the children improve their dance techniques.
22. St Augustine's Court will have Community Payback to paint their 8 wooden communal benches.
23. Additional Parking space will be acquired with the removal of a disused bin store- which will also remove a fly-tipping location.

## 12. Community Libraries/Hubs

All Community Hubs and Libraries across Leeds are 'Welcome Spaces' this initiative is to provide a warm welcome with free hot drinks and games where residents can spend some time with company.

We are collaborating with Zero Waste Leeds on the Winter Coat appeal and are drop off and collection points for redistribution of winter coats/fleeces etc.

### **The Compton Centre:**

#### **Weekly sessions:**

**ESOL Classes**-ESOL classes for beginners and Advanced session every Monday.

**CAB drop-in surgery.**CAB hold a weekly surgery Tuesday 9am-12pm. Pre booked appointments needed.

**GRT Parenting Group**-Tuesday 9am-12pm to promote Health and wellbeing.

**GRT/St Vincent's surgery.**GRT drop-in surgery-Gypsy Roma Traveller Team continue to hold a drop-in surgery every Wednesday 10-12 to assist the EU communities with utilities, EUSS, School and DWP form filling.

**St. Vincent's Outreach session/.GRT** at Compton Centre- continue to hold EUSS advice and practical support every Wednesday 10-12pm who link in with the GRT team. From Jan

**Haamla Every Wednesdays** -Haamla is a unique service that provides essential support for pregnant women, and their families, from minority ethnic communities, including asylum seekers and refugees, throughout their pregnancy and postnatal period. It aims to improve access within maternity services, empower and inform women of the choices available during their pregnancy and birth, thereby improving their health and wellbeing

**Youth Service**-Youth service continue to run youth provision every Wednesday 4pm -6.30 pm. They also run a Girls support group on a Thursday 4pm -6pm.

**Leeds City Credit Union-weekly surgery**-LCCU run a weekly surgery-Thursdays 9am-12pm.

#### **Digi Drop in**

Fortnightly Digi drop ins, Thursdays, 1.30 – 2.30pm: Need help to use your tablet, smartphone or computer to try something new, say hello or get tech savvy? Come along with your device or use a library PC and talk to our friendly librarians who will help you get started. Learn how your device can help you improve your health, access library services to read eBooks and magazines online and even save you money. This is a free event, no booking required

**Story and Rhyme Time**-Story and rhyme time is weekly on Fridays 10.30am – 11.30am, a fun interactive session for families with children under 5 years old. This is also followed on by a toy library session and play and stay each week where toys, crafts are currently available for the children to play with on site.

**Stay and play** every Friday 11.30am to 12.30pm - **Playboxes**- to support Wellbeing pod and Story & Rhyme and allow children and families the opportunity for high quality creative play (with opportunities for speech and language and maths development) using everyday objects, that can be replicated at home. Designed by Playful Leeds in partnership with Leeds Libraries. The Playboxes are out in the children's area daily.

**Money Buddies**-Money Buddies Sessions every Friday 9am-12pm. This is a drop-in service where customer can access financial and debt advice and receive representation on specific issues.

**Leeds Pathways**- LCC Leeds Pathways support team who deliver a couple of weekly drop in sessions for young people at The Compton Centre.

#### **Ongoing surgeries-**

**PACT-Community Safety Meeting**- This is an opportunity for residents of Gipton & Harehills to meet with Police and Partner agencies to discuss local issues and also set what the policing priorities are moving forwards-Tuesdays every 6 weeks.

**Quiet Study Space**-Allocated a quiet large room for those who want to study in a quiet space every Tuesday 3.30pm-6.30pm.

**BIPC drop in**- Business & IP Centre-Librarian led these session help with Information & guidance, Business advice sessions, Tax and bookkeeping advice, Trademarks, copyright and designs, Patent clinic, Legal clinic. Sessions are last Friday of the mth 9.30am-12.30pm.

### **In Main library:**

**Knitting & Glow**-Your Space run a knitting & Crochet session weekly, free for all to join.

**Manbassador**-A local group for men run by ZEST-Men's health unlocked, men can come along meet other men locally and across the city, learn new skills, take part in a range of interesting activities, become part of the mens Health Unlocked Network, Help create a new magazine in Leeds. Group meets at The Compton Centre weekly.

### **Leeds Baby Bank**

Leeds Baby Bank continue to run a pre bookable appointment service every 2<sup>nd</sup> Thursday of every month. Leeds Baby Bank donate Nappies, wipes, toiletries, infant food by age, Leeds Baby bank also accept donations of cots, prams, stair gates, Moses baskets, high chairs.

**Gipton and Harehills Neighbourhood Policing Team Contact Point**- Gipton and Harehills Neighbourhood Policing Team will be holding community contact points, every three weeks at the Compton Centre.

**Supporting BAME communities with Sensory Impairments**. Run by ABA Leeds-mthly drop ins at Compton Centre, A friendly place to talk, learn, engage and improve social and emotional wellbeing.

**Advonet Session**-10am-12pm Wednesday & Thursday- The sessions began week commencing 5<sup>th</sup> June. The sessions provide support, sign posting, guidance and referrals for a range of issues. The advocates can also offer one to one appointments for more in-depth work.

**Chatty Cafe**-offers free friendly space for people to meet and chat and share information, find out what's happening in their local community, enjoy some snacks and a cuppa together. Mondays 10am-12pm. Harehills Action Team led.

**Cllr Surgery**- 1<sup>st</sup> Saturday of the Mth 10am-11.30am

**Lego Club** 11.00-12.00 Saturday

**Code club** 4.30-5.30

**Lego Club** -Saturday 10am-12pm

**Secret Cinema Club**-Cinema club as resumed at Compton, the cinema club runs monthly 4pm till 6pm, Free event, with popcorn and juice, all welcome.

### **November 2023**

**Fantastic Beast**-Saturday 18 November 11 - 12.30pm The Compton Centre-

Create your own fantastic beast, inspired by the collage art of Elaine Cooper in Art Library Collections- strange hybrids, bizarre mutations or weird wild things.

All work will be made from scrap, using art materials that most have at home.

The session is relaxed and accessible - no previous art experience is necessary-

This event is part of CreativeMind - a programme of activities to promote positive health and wellbeing through art and creativity.

Events include author talks, taster sessions and workshops.

**Active Leeds Bump & baby fit yoga sessions**- Sessions led/organised by Leeds Active. Will run in 5 blocks, Nov 2023 – July 2024. Each block is 6 weeks/6 sessions.

Sessions to take place in Compton's Children's Library space.

Bump and Baby fit Yoga for mother and baby is a referral only program.

The women will receive a referral link from their own midwife.

If anyone enquires, they need to speak to their midwife.

Every Block includes Week 1 – Mindset Coaching sessions delivered by Molly Scarlett - The following 5 weeks will be Bump and Baby Fit Yoga for mother and baby.

### **Immunisation session-for COVID & FLU.**

**Women only fitness & toning sessions**-Free to attend starting 24<sup>th</sup> November 10.30am-11.30am. Delivered by Give a Gift.

### **Winter Festival:**

25<sup>th</sup> Nov, visit from Santa in Santa's grotto, every child receive a gift. craft Activities, also Zest attended to deliver crafts.

Joining Compton's Winter Festival there is **Christmas Street Market** led by Harehills Action Team. The Christmas Street market featured a selection of traders selling products which celebrated the diversity and culture of Harehills, from food to handmade crafts.

### **Launce of Café by Proverb31Woman**

Proverbs31woman are the new tenders for the café within Compton Centre Community Hub & Library the launch of the café at Compton was held on the same day at the Winter Festival.

**Freedom 4 Girls** -gave out 112 washable/reusable period pants, 82 washable/reusable pads , 6 menstrual cups, 26 packs of disposable pads, 14 pks of tampons & 50 cono around periods at the Winter festival.

**Public Health**-16 days action, 50 questionnaire Health needs assessment completed & 50 goodie bags issued at the Winter festival.

**Around 300 persons attended the event.**

### **Book Crossing - Free Comic Giveaway Event**

In conjunction with Thought Bubble, the Yorkshire Comic Art festival, we have free comics for teens and adults to give away! Join us on Friday 10th November and help us to achieve our aim to get everyone reading more. Just pop along to the library and pick-up some great comics to take home and read or give to a friend!

### **BIPC (Business & IP Centre Leeds)**

Whether you're looking to start, grow or run a business, we'll support you to:

- learn skills you'll need to start and grow a business
- get to know your customers and research your market
- protect your products and services with patents, trade marks, registered designs and copyright
- get one-to-one specialist guidance and support
- gain confidence and meet fellow entrepreneurs

### **December 2023**

#### **Childrens centre Christmas story & singalong with Santa**

Little Owls Harehills Children attended Compton to deliver their annual Festive Story & sing along with their family watching.

Special surprise from Santa and Santa's little elves. Each child received a present.

#### **Festive Cinema Club**

With Free juice and popcorn.

#### **NHS winter vaccination programme**

Drop in clinic for Covid and flu vaccines, inc. blood pressure taken.

#### **Feel Good factor pop up**

### **January 2024**

#### **Remaking midwinter**

Drop in craft event for children and their grownups using recycling from Christmas, rapping paper, boxes, ribbons jars ect.

#### **Community Liver Health checks:**

The Liver Buddies team at Leeds Teaching Hospitals NHS Trust are encouraging members of the public in Leeds to get their liver checked for free in our mobile clinic vehicle 'O-liver' at our screening roadshow.

The roadshow offers a chance for individuals to prioritise their liver health by receiving free liver screening and gaining valuable information about various types of liver disease and how to improve their liver health.



**eSports Gamers Group 12-16yrs**-Join our Nintendo Switch eSports gamers group and challenge your friends! Splatter each other in Splatoon, smash each other in Super Smash Bros, see who's the best Mario Kart racer. All in a friendly manner, of course...

We have space for up to eight gamers with four playing at a time, while the other four provide lively commentary! As you build your team you could even challenge other libraries to a battle to see who the best eSports team in Leeds

### **Introduction to volunteering**

An eight course for anyone considering working in the voluntary sector and will provide them with the opportunity to develop new skills, explore new interests while generating a sense of achievement.

### **Harehills Creative Group**

For women aged 55 + living in the area of Harehills/Gipton a friendly drop in sessions with a range of different themes, all aimed at people using creative techniques to share their life stories. Session with focus on building skills in a creative expression.

### **Blues readers group**

A new reader group now at Compton.

### **Professor Chris Witty , Chief Medical Officers visit to Leeds:**

Prof Chris Witty met with Tom Riordan, then headed to Compton Community Hub Library. where Introductions to the Better Together Service where challenges and solutions were discussed, followed by System Working to Address Health Inequalities, Focused discussions on Cost of Living, Health Protection and Primary Care with partners.

### **February 2024**

#### **Public Health**

Long Term Conditions team within Public Health and their project team filmed some short diabetes videos in various languages.

An external video production company lead on the filming.

#### **Employment & Skills**

E&S delivered a worked shop around 'Money and Work'

#### **Suicide bereavement service-Drop in**

#### **Yorkshire Mesmac-community testing drop in**

#### **Preventing and reducing vulnerability to exploitation course for Romanian Community**

The course was run on the Saturday. The Skills and Education Group, in partnership with The Romanian and Eastern European Hub, are offering a free training course which aims to help reduce vulnerability to labour exploitation of Romanian nationals in the UK.

The training will equip learners with important knowledge and skills on how to reduce risks of exploitation or slavery and how to access decent and fair work.

The course covers six key subjects:

Labour exploitation

Modern Slavery

Types of employment and worker status

Employment contracts

Employment rights

Pay and salary

### **Burmantofts Community Hub and Library**

**Digital drop in session**-every fortnight-Librarian led-Free to all. Fortnightly Digi drop ins, Wednesdays, 1.30 – 2.30pm: Need help to use your tablet, smartphone or computer to try something new, say hello or get tech savvy? Come along with your device or use a library PC and talk to our friendly librarians who will help you get started. Learn how your device can help you improve your health, access library services to read eBooks and magazines online and even save you money. This is a free event, no booking required.

**Lego Club**-Every 4 weeks, Free for all to join. 15.45-16.45. This will be a drop-in session for families, running monthly on the 4<sup>th</sup> Wednesday. The sessions will be themed and based on a specific project or idea, as opposed to open-ended play, though I won't stop kids from being creative of course. Lego is a great STEM activity, so this is almost a precursor to our Code Club for younger kids – hopefully they can grow with us and move onto CC, and then a club for secondary school kids we have in the pipeline.

**CAB drop-in surgery**-CAB hold a weekly drop-in surgery. Pre booked appointments needed.  
**BRH Neighbouring Policing Team contact point** at Burmantofts Hub- their community contact points to be held every 3 weeks from 10am-11am Thursday mornings.  
**Councillor Surgeries**-, 3<sup>rd</sup> Tuesday of the month,  
**Leeds City Credit Union**-Hold weekly drop-in sessions to help with money & budgeting.

### **Leeds Building Service.**

LBS deliver a drop-in surgery every fortnight on Fridays 9.30-12pm

### **Job Shop pop up.**

Job shop pop up to deliver Employment support, Mondays, Wednesday & Fridays.

### **Winter festival**

The Burmantofts Hub Winter festival event was a huge success and was attended by over 150 people. Families were able to have a visit with Santa Claus and his Elves in his Grotto, and all the children were given a present to take home.

There were activities for all attendees to join in with crafts, which they were all able to take home, including 'Make your own LED light up Christmas cards, Design a Christmas Calendar and Bauble decorating.

There was a delicious hot chocolate station, where everyone could have a hot chocolate with cream and marshmallows.

### **Seacroft Community Hub and Library**

#### **Weekly sessions-**

**Registrars** –run weekly, pre booked appointment only.

**Story and Rhyme Time** -Our very popular story and rhyme time is held every Thursday at 10.30am – 11.30am its interactive for children under 5 years old.

**Digital121 Drop-in** 'Get online. Get connected.' Fortnightly Tuesdays 10:30-11:30am 13th, 27th September and 11th October 1st, 15th, 29th November and 13th December Seacroft Community Hub & Library Need help to use your tablet, smartphone or computer to try something new, say hello or get tech savvy? Come along with your device or use a library PC and talk to our friendly librarians who will help you get started. Learn how your device can help you improve your health, access library services to read eBooks and magazines online and even save you money. This is a free event, no booking required

**Digital Skills Event workshop**-free for anyone who is interested in a career in the digital sector

**Crafts@Seacroft**-Free Craft/knitting/crochet group in collaboration with Stroke Association to get those recovering back out in the community to meet new people. Every Tuesday's 1.30-3.30pm

**Police Contact point drop-in** -fortnightly drop-in for residents to raise and concerns with PCSO – having the PCSO visible, encourages customers to come forward and chat to them.

**Money Buddies**-Money Buddies Sessions every Thursday, 12:30-4 This is a drop-in service where customer can access financial and debt advice and receive representation on specific issues.

**Leeds Pathways**- LCC Leeds Pathways support team who deliver a couple of weekly drop in sessions for young people Thursday afternoons

### **Advocacy Pop up session**

### **Chair based Exercise – Wednesday's 12-1pm**

Weekly sessions, gentle chair based exercise with music – 10 funded sessions

### **Herbal Remedies**

Learn how to make herbal remedies, using only natural ingredients – Monday's 10:30-12:30s 10:30-12:30

## **November 2023**

**eSports Gamers Group 12-16yrs**-Join our Nintendo Switch eSports gamers group and challenge your friends! Splatter each other in Splatoon, smash each other in Super Smash Bros, see who's the best Mario Kart racer. All in a friendly manner, of course...

We have space for up to eight gamers with four playing at a time, while the other four provide lively commentary! As you build your team you could even challenge other libraries to a battle to see who the best eSports team in Leeds

**Code Club 14.11.23**

### **Death Café:**

Death Cafés are an international movement dedicated to encouraging discussion about death and dying in a relaxed environment.

A welcome opportunity to ask those awkward questions you've always wanted to ask. Find sources of support and help, including a vast array of books available to loan.

This is a free event, just turn up on the day. Refreshments provided.

**Yorkshire Mesmac - Sexual Health Clinic/screening pop up-**

### **Book Crossing - Free Comic Giveaway Event**

In conjunction with Thought Bubble, the Yorkshire Comic Art festival, we have free comics for teens and adults to give away! Join us on Friday 10th November and help us to achieve our aim to get everyone reading more. Just pop along to the library and pick-up some great comics to take home and read or give to a friend!

### **Chapel FM**

Assistant Community Hub Manager Diane and Project manager Bushra attended a group session at Chapel FM for a live group discuss where we will have the opportunity to mention work/activities that we have going on in Seacroft Hub, other partners also got the chance to mention all the amazing work they all do in the LS14 area.

## **December 2023**

### **Woodview Christmas market**

Librarians and staff from Seacroft Hub attended Woodview Christmas market to promote all the services/events we have in our Community Hubs and Libraries.

### **Festive Story & Rhyme Time & Activities**

Local children and their families will be able to visit Seacroft Hub and enjoy our festive Story & Rhyme Time with a special visit from Santa and Santa's little Elves. Each child will receive a gift from Santa and a chance to make Christmas crafts such as decorations to take home, calendars, cards, lanterns and much more.

**eSports Gamers Group 12-16yrs**-Join our Nintendo Switch eSports gamers group and challenge your friends! Splatter each other in Splatoon, smash each other in Super Smash Bros, see who's the best Mario Kart racer. All in a friendly manner, of course...

We have space for up to eight gamers with four playing at a time, while the other four provide lively commentary! As you build your team you could even challenge other libraries to a battle to see who the best eSports team in Leeds

### **Family History Group**

The Seacroft Family History Group, runs on a fortnightly basis, using Ancestry on public access pc's. Librarian led.

## **January 2024**

### **Community Liver Health checks:**

The Liver Buddies team at Leeds Teaching Hospitals NHS Trust are encouraging members of the public in Leeds to get their liver checked for free in our mobile clinic vehicle 'O-liver' at our screening roadshow.

The roadshow offers a chance for individuals to prioritise their liver health by receiving free liver screening and gaining valuable information about various types of liver disease and how to improve their liver health.

## **Winter Film Club-**

Film showed was Trolls World Tour -23 attended.

## **COVID & Flu Vaccination drop in.**

Drop in clinic for Covid and flu vaccines, inc. blood pressure taken. Good turnout both days over 20 seen at first session.

## **February 2024**

## **Fostering Information/Recruitment Pop up**

### **Yorkshire MESMAC community testing**

### **Community Links drop in sessions**

### **BOOK OF ETERNITY PERFORMANCE**

Northern Opera Presents... The Book of Eternity

Join us for an interactive musical adventure featuring detectives trying to track down clues within the library to find the rare and mysterious 'Book of Eternity'. Can you help them find it and the culprit before the end of the show? This unique performance is written by acclaimed children's author Claire Povey and produced by Northern Opera Group.

A pay-what-you-decide family-friendly event suitable for children aged 8 to 12. All children must be accompanied by an adult. \*Adults don't need a ticket.

10.30am-11.30am, Tuesday 13th February

Seacroft Community Hub and Library

Get ready to solve a mystery among the bookshelves

## **13. Community Engagement: Social Media**

**Appendix 1** - Provides the committee with information on posts and details recent social media activity for the Inner East Community Committee Facebook page.

## **Corporate Considerations**

## **14. Consultation and Engagement**

The Community Committee has, where applicable, been consulted on information detailed within the report.

## **15. Equality and Diversity/Cohesion and Integration**

All work that the Communities Team are involved in is assessed in relation to Equality, Diversity, Cohesion, and Integration. In addition, the Communities Team ensures that the wellbeing process for funding of projects complies with all relevant policies and legislation.

## **16. Council Policies and City Priorities**

Projects that the Communities Team are involved in are assessed to ensure that they are in line with Council and City priorities as set out in the following documents:

- Vision for Leeds 2011 – 30
- Best City Plan
- Health and Wellbeing City Priorities Plan
- Children and Young People's Plan
- Safer and Stronger Communities Plan
- Leeds Inclusive Growth Strategy

## **17. Resources and Value for Money**

Aligning the distribution of community wellbeing funding to local priorities will help to ensure that the maximum benefit can be provided.

## **18. Legal Implications, Access to Information and Call In**

There are no legal implications or access to information issues. This report is not subject to call in.

## **19. Risk Management**

Risk implications and mitigation are considered on all projects and wellbeing applications. Projects are assessed to ensure that applicants can deliver the intended benefits.

## **20. Conclusions**

The report provides up to date information on key areas of work for the Community Committee.

## **21. Recommendations**

The Community Committee is asked to note the content of the report and comment as appropriate.

## **22. Background documents<sup>1</sup>**

None.

---

<sup>1</sup> The background documents listed in this section are available for inspection on request for a period of four years following the date of the relevant meeting Accordingly this list does not include documents containing exempt or confidential information, or any published works Requests to inspect any background documents should be submitted to the report author.